

Kilombero Cluster Development to 2015

Kilombero Cluster Development by 2015 Infrastructure

Roads

Engage Tanroads and DP's to establish a system of priorities for Trunk and Regional Road rehabilitation and upgrading (to bitumen standard).

For **Trunk Roads**, this includes:

Part of the T16 road (Mikumi – Mahenge) between and Ifakara and Ifakara – Mahenge, including construction of a bridge over the Kilombero River.

For **Regional Roads** this includes:

Kilombero Cluster:

Part of the Ifakara – Taveta road, especially the section Ifakara – Milimba.

Part of the Lupiro – Kilosa Kwa Mpepo road, especially the section Lupiro – Sofi Maji – Tanga.

Engage PMO – RALC and DP's to establish a system of priorities for District and Feeder Road rehabilitation and upgrading (to bitumen standard).

Stations

Engage TAZARA and DP's (especially the Chinese Government) to rehabilitate sidings and all interchange facilities for handling agriculture produce and other cargo at the following railway stations :

Kilombero Cluster:

Msolwa'B; Mang'ula; Ifakara, Mgeta; Mlimba

Electricity

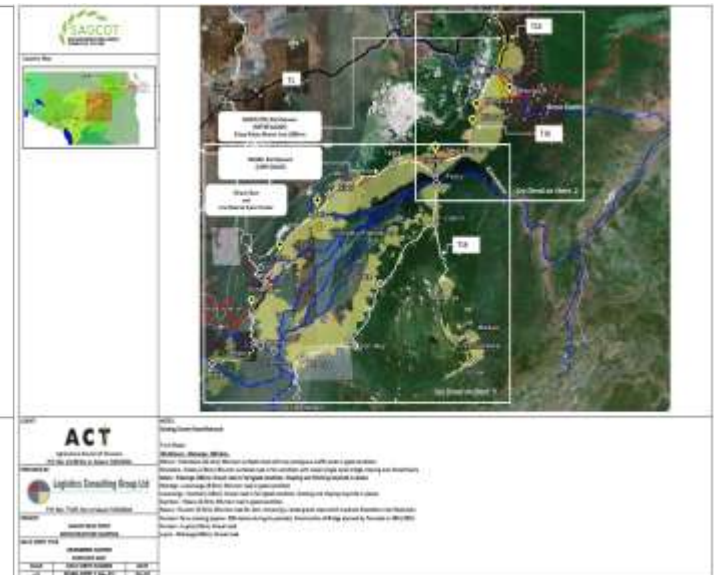
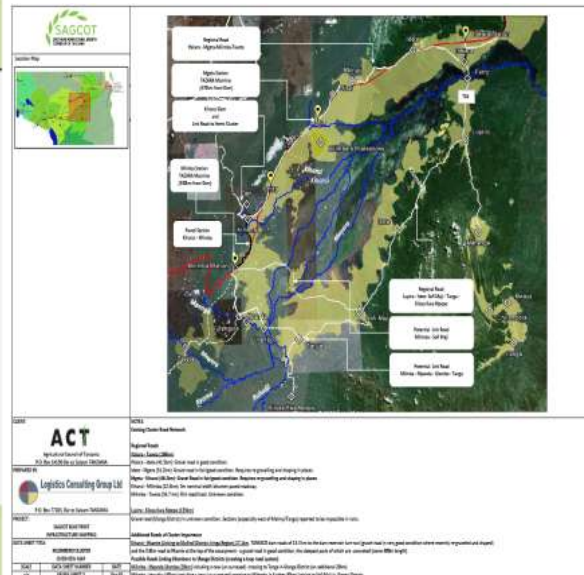
Engage Tanesco to establish a priority system for extending the rural (11KV) electricity network to areas of high agriculture productivity in the various clusters.

Infrastructure Investment (to 2015)

Backbone: \$65,195,000

Last Mile: \$24,860,000

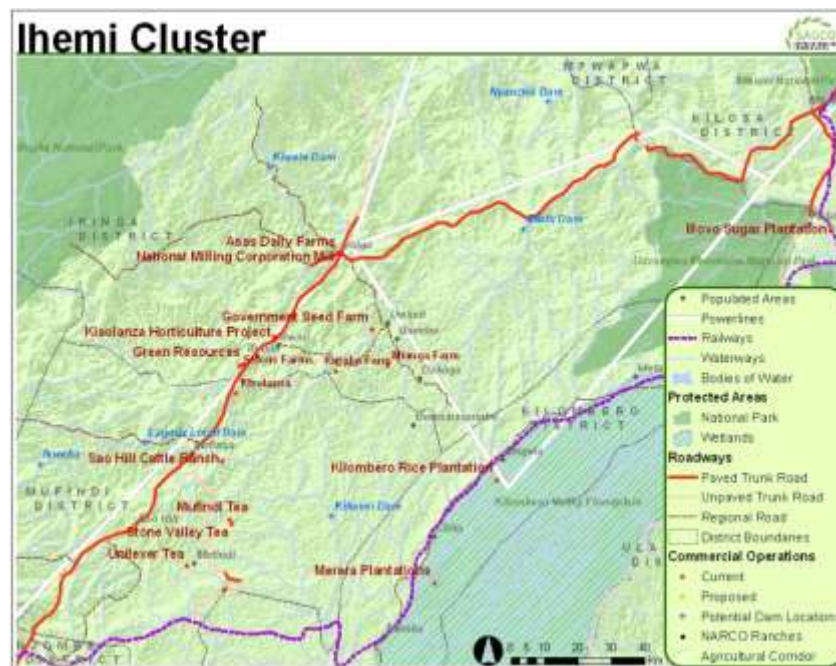
Supporting: \$4,750,000



Ihemi Cluster Development to 2015

Ihemi Cluster
Districts covered: : Iringa Rural, Kilolo and Mufindi Districts
Total area (ha): 1,321,390
Total arable land (ha): 617,730
Total cultivated area (ha): 279,200
Population: 501,204
Population density (per km ²): 38
Population growth rate: 1.5%
Land under existing or planned irrigation schemes (ha): 17,932
Major commodities: Maize, Paddy, Pulses, Sunflower, Banana, Potatoes, Wheat, Cattle, Pigs, Poultry
Annual rainfall: 600-1200mm (one rain p.a.)
Temperature range: 13-22°C
Altitude: 1300-2200m
Environmental issues: deforestation, illegal river water extraction, soil erosion

Ihemi Cluster Development by 2015 Agriculture	
Emergent farmer irrigated & rain fed-	additional 10,550 ha
Commercial irrigated & rain fed-	additional 5,500 ha
Additional Production	
Field Crops -	53,400 mt
Beef -	336 mt
Banana -	9,000 mt
Other hortic -	15,000 mt
Additional employment	
On-farm -	740
Emergent -	910
Smallholder -	6,000
Processing -	3,590
Value chain -	4,330
Indirect -	70,065
TOTAL	- 85,635



Ihemi Cluster Development to 2015

Ihemi Cluster Development by 2015 Infrastructure

Roads

Engage Tanroads and DP's to establish a system of priorities for Trunk and Regional Road rehabilitation and upgrading (to bitumen standard).

For **Trunk Roads**, this includes:

Part of the T16 road (Mikumi – Mahenge) between and Ifakara and Ifakara – Mahenge, including construction of a bridge over the Kilombero River.

For **Regional Roads** this includes:

Ihemi Cluster

Part of the Iringa-Uwindi-Kilolo-Dabaga Road;

Part of the Mafinga – Mgololo Road;

The Nyoloto – Kibao Road;

The Kinyanambo – Madibera Road;

Engage PMO – RALC and DP's to establish a system of priorities for District and Feeder Road rehabilitation and upgrading (to bitumen standard).

Stations

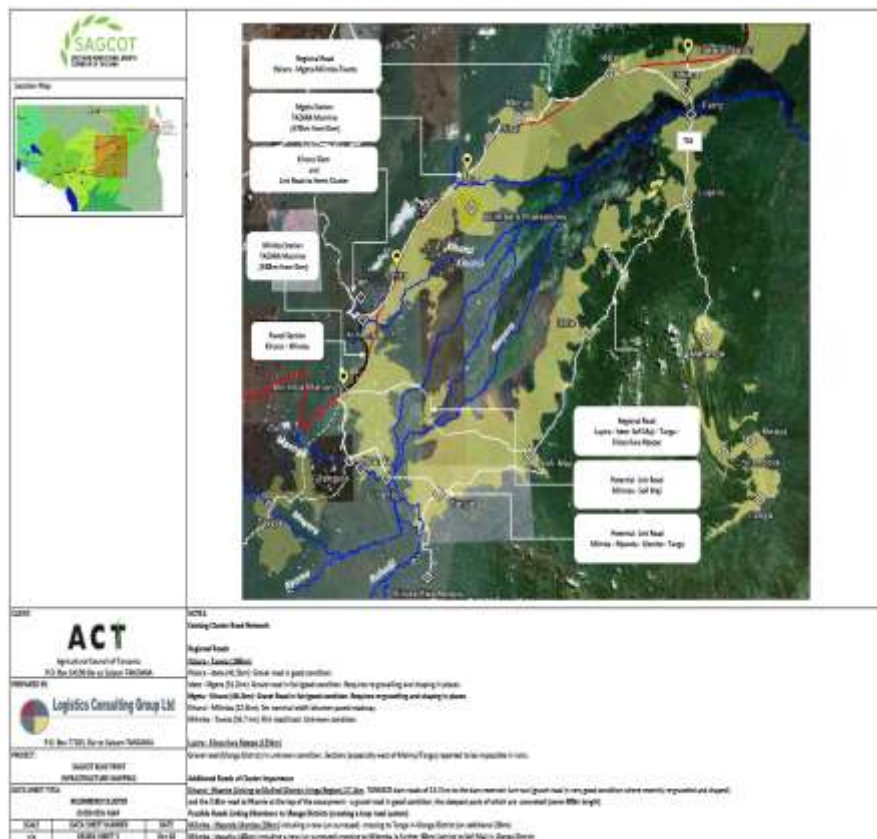
Engage TAZARA and DP's (especially the Chinese Government) to rehabilitate sidings and all interchange facilities for handling agriculture produce and other cargo at the following railway stations :

Ihemi Cluster:

Makungu (which although provided with sidings for Mufindi Paper Mills, has no facility for agriculture) and Makambako

Electricity

Engage Tanesco to establish a priority system for extending the rural (11KV) electricity network to areas of high agriculture productivity in the various clusters.



Infrastructure Investment (to 2015)

Backbone: \$65,195,000

Last Mile: \$24,860,000

Supporting: \$4,750,000

Mbarali Cluster Development to 2015

Mbarali Cluster
Districts covered: : Mbarali
Total area (ha): 1,164,240
Total arable land (ha): 137,200
Total cultivated area (ha): 96,320
Population: 192,230
Population density (per km ²): 17
Population growth rate: 2.4%
Land under existing or planned irrigation schemes (ha): 54,422
Major commodities: Paddy, Maize, Beans, Sorghum, Poultry, Cattle
Annual rainfall: 500-800mm (one rain p.a.)
Temperature range: 9-30°C
Altitude: 750-1400m
Environmental issues: Ruaha NP, wetlands

Mbarali Cluster Development by 2015 Agriculture
Emergent/smallholder farmer irrigated & rain fed- additional 5,600 ha
Commercial irrigated & rain fed- additional 4,000 ha
Additional Production
Field Crops - 17,800 mt
Beef - 112 mt
Rice - 39,200 mt
Banana - 18,000 mt
Other hort. - 5,000 mt
Additional employment
On-farm - 680
Emergent - 720
Smallholder - 2,000
Processing - 2,480
Value chain - 3,160
Indirect - 40,680
TOTAL - 49,720

